



The Design of Multi-Objective Fuzzy-Robust Model for Portfolio Optimization

Nader Omid ¹, Mehdi Khajehzadeh Dezfooli ^{2*}

¹ Department of Mathematics, Khorramabad Branch, Islamic Azad University, Khorramabad, Iran.

² Department of Management, University of Tehran, Tehran, Iran.

ABSTRACT

One of the important issues in portfolio optimization is considering uncertainties of future return. Any disturbance in the values of parameters makes the solution as non-optimized or non-justified. This study designs a fuzzy-robust multi-objective model for portfolio optimization based on the data of Tehran Stock Exchange market and finally the results are compared with the multi-objective model.

The results prove relative stability of fuzzy-robust multi-objective optimization model compared with robust multi-objective optimization model.

Keywords: Portfolio, Robust, Fuzzy robust

Corresponding author: Mehdi Khajehzadeh Dezfooli

parameters on an interval, the solution values are highly reliable (Vanlendon, 2002).

INTRODUCTION

The portfolio selection is one of the important issues in financial engineering. Markowitz mean-variance model created a revolution in portfolio selection. Theoretically, the presented model has unique attributes;

its weaknesses prevent using the model in practice. Various researches have been conducted on model performance improvement in real world.

In financial world, uncertainty is one of the deterministic items. Ignoring the reason of volatilities in financial markets, these uncertainties make classic approaches of math modelling challenging. This issue is one of the most important problems in modelling and math decision making regarding portfolio selection. The main assumption in math programming is as input data is exactly clear and is equal to nominal value (Sajadi et al, 2010). The data with uncertainty can be in constraints or objective function. If the input data in constraints have value except their nominal value, the constraint is violated or it is not feasible and if the input data of objective function are deviated from their nominal value, the optimization is ignored or optimal solution of nominal problem is not justified.

As optimization issue of portfolio consists of values as stock price, profit rate, risk and etc., these values are not defined exactly and only can be predicted and these problems can be used in robust optimization technique. Various researchers have conducted some studies in this regard.

Non-robust methods consider definite values for parameters and achieve optimal solution. Robust methods present a solution close to optimal solution and show high costs (low return) but the solution is highly reliable. By change of

The first step for robust modeling was presented by Soyster's linear programming model to produce a solution justified for data belonging to ellipsoidal uncertainty sets. The mentioned model presented the solutions as conservative against optimization of nominal problem to be sure of robustness. Then, The optimization community, on the issue of robustness until the work of Ben-Tal and Nemirovski, El Ghaoui and Lebret, El Ghaoui et al. and Bertsimas, D. & Sim (Bertsimas, D. & Sim, 2004). In robust optimization models like Bertsimas, D. & Sim (2004), the middle value of these intervals is called nominal value. In some cases of real problem for decision maker, exact determination of interval length in which nominal value volatilizes is not easy and determines the interval length is ambiguous. If the decision maker considers the interval length as high, conservatism and costs are increased. If the interval is low, decision making risk is increased. In addition to the balance between risk and cost (return), the decision maker states the interval length not clearly. To solve this problem, an approach is stated in which the decision maker can state the length of interval as fuzzy number and balanced risk is required

2- The theoretical review of robust optimization

Consider the following linear math model:

$$\begin{aligned} \text{Max } cx & \quad (1) \\ A(p)x & \leq b \end{aligned}$$

There are different definitions of robustness and the required models. One important concept is Constraint Robust Solutions

and refers to the solutions as justified for all values of uncertain parameters. The math model to achieve the constraint robust solutions is as follows:

$$\begin{aligned} & \text{Max } cx \\ & A(p)x \leq b \quad \forall p \in U \end{aligned} \tag{2}$$

In this model, p is vector of uncertain parameters and U the set of uncertain states.

Another common concept in robust optimization literature is Objective Robust Solutions. This concept is raised when the objective function consists of uncertain parameters. The robust solutions to objective function for all feasible values of uncertain parameters are close to optimal solution. The linear optimization problem is considered as follows:

$$\begin{aligned} & \text{Max } c(p)x \\ & Ax \leq b \end{aligned} \tag{3}$$

Here, U is the uncertain set and p uncertain parameters and uncertainty parameters only exist in objective function. Objective Robust Solutions is achieved as follows:

$$\begin{aligned} & \text{Max } (\text{Max}_{p \in U} c(p)x) \\ & Ax \leq b \end{aligned} \tag{4}$$

Robustness to objective function is special state of robustness to constraints. In other words by definition of a new variable z and by adding constraint $c(p)x \geq z$, we reach an equivalent model (1). With this approach, robust optimal solution is the robust solution with the best objective function value.

There are various approaches to solve robust problems. Bertsimas and Sim approach (budget uncertainty) maintains the linear model and this method has full control on conservatism degree of each constraint.

Let ith constraint of nominal problem (primary) is as $a_i x \leq b_i$ and U_i is the set of constraint ith uncertainty parameters. Based on data uncertainty model $\hat{a}_{ij} \in U_i$, according to a symmetrical distribution with a mean equal to nominal value a_{ij} is in interval $[a_{ij} - \hat{a}_{ij}, a_{ij} + \hat{a}_{ij}]$.

It is assumed that in constraint ith, the defined value of Γ_i parameter is changed to the nominal value and by this assumption against constraint violation ith, control is done certainly. One guaranty is given that even if more than Γ_i parameter is changed compared to nominal value, the solution is justified probably. Bertsimas & Sim approach to present robust counterpart of a certain model is called budget uncertainty. It is impossible that all uncertain parameters a_{ij} are changed compared to nominal value. In the presented model, the aim is to be careful against all states in which maximum $|\Gamma_i|$ uncertain coefficient is changed and an a_{it}

coefficient is changed as $(\Gamma_i - |\Gamma_i|)\hat{a}_{it}$ and this is done to justify the solution. In other words, it is assumed that nature is finite in its own behavior and only a subset of coefficients is changed to worsen the objective function. For each I, Γ_i parameter as not an integer has a value in $[0, |U_i|]$. Γ_i is required to regulate the robustness degree of model against its conservatism degree. In this method, if the nature behavior is as the mentioned form, then the robust solution is justified as 100%. In addition, if more than Γ_i parameter is changed, then the robust solution is justified probably. One of the advantages of this method is that it is generalized easily to discrete space optimization problems.

The robust counterpart is the following non-linear model:

$$\begin{aligned} & \text{Max } cx \\ & \text{s.t. } \sum_j a_j x_j + \text{Max}_{\{a_j, b_j, c_j, d_j, e_j, f_j, g_j, h_j, i_j, j_k, l_j, m_j, n_j, o_j, p_j, q_j, r_j, s_j, t_j, u_j, v_j, w_j, x_j, y_j, z_j\}} \{ \sum_j \hat{a}_j y_j + (\Gamma_i - |\Gamma_i|)\hat{a}_{it} y_i \} \leq b_i \quad \forall i \\ & -y_j \leq x_j \leq y_j \\ & l \leq x \leq u \\ & y_i \geq 0 \end{aligned} \tag{5}$$

If Γ_i integer is selected, i^{th} constraint is protected as the followings.

$$\beta_i(x, \Gamma_i) = \max_{\{a_j, b_j, c_j, d_j, e_j, f_j, g_j, h_j, i_j, j_k, l_j, m_j, n_j, o_j, p_j, q_j, r_j, s_j, t_j, u_j, v_j, w_j, x_j, y_j, z_j\}} \{ \sum_j \hat{a}_j |x_j| \} \tag{6}$$

The above non-linear model is turned into a linear model with some changes. The robust counterpart as 6-2 is equal to Bertsimas and Sim approach with linear structure.

$$\begin{aligned} & \text{Max } cx \\ & \text{s.t. } \sum_j a_j x_j + z_i + \sum_{j \in U_i} p_{ij} \leq b_i \quad \forall i \\ & z_i + p_{ij} \geq \hat{a}_{ij} y_j \quad \forall i, j \in U_i \\ & -y_j \leq x_j \leq y_j \quad \forall j \\ & l_j \leq x_j \leq u_j \quad \forall j \\ & y_j \geq 0 \quad \forall j \\ & z_i \geq 0 \quad \forall i \\ & p_{ij} \geq 0 \quad \forall i, j \in U_i \end{aligned} \tag{7}$$

By changing Γ_i we have flexibility of controlling robustness of model against solution conservatism level.

3- Goal programming model for portfolio optimization

Lee, S., Chesser (1980) introduced goal programming model for portfolio selection. Let $J = \{1, 2, \dots, n\}$ is the set of securities for investment as capital return rate for each of securities $j \in J$ is equal to random variable R_j with the mean $\mu_j = E\{R_j\}$ and

.j = {1,2, ..., n} is invested price in portfolio (decision variables).

Lee, S., Chesser (1980) model is as follows:

$$\min W_1 d_1^+ + W_2 (d_2^- + d_3^-) + W_3 \sum_{i=4}^{n+3} d_i^+ + W_4 \sum_{i=n+4}^{2n+3} d_i + W_5 d_{2n+4}^- \tag{8}$$

$$\text{st} \tag{9}$$

$$\sum_{j=1}^n x_j + d_1^- - d_1^+ = BC \tag{9}$$

$$\sum_{j=1}^n R_j x_j + d_2^- - d_2^+ = DR \tag{10}$$

$$\sum_{j=1}^n B_j x_j + d_3^- - d_3^+ = B(BC) \tag{11}$$

$$x_j + d_{j+3}^- - d_{j+3}^+ = V_j \tag{12}$$

$$x_j + d_{2n+2+j}^- - d_{2n+2+j}^+ = D_j \tag{13}$$

$$BC + \sum_{j=1}^n R_j x_j + d_{2n+4}^- - d_{2n+4}^+ = M \tag{14}$$

The term (9) considers the budget constraint. The term (10) focuses on portfolio return rate more than DR (Total portfolio income determined based on the view of investor). The term (11) considers portfolio systematic risk. If the investor predicts the market is improved in future, he should select his portfolio close to the market beta. It is assumed that future condition of market is like this and in the term (11), portfolio beta is maximized based on the opinion of investor. The objectives (12), (13) consider investment constraint in each of securities (the max and min investment) and finally the term (14) focuses on maximization of sum of budget and portfolio return.

W₁ to W₅ show the priorities to objectives (constraints) as determined according to the investor.

x_j: Decision variable indicating the invested money in jth stock.

BC: The allocated budget for investment

R_j: The expected return based on $R_j = \frac{P_{t+1} - P_t + D_t}{P_t}$

P_t: Price at tth period

D_t: Dividend

DR: Total expected income of investment

B_j: The expected beta per share of portfolio

B : The expected systematic risk

V_j: The maximum expected investment of investor in jth stock

D_j : The expected value of investment at ith stock based on beta of stock jth

M :A big value

4-The robust goal programming model for portfolio optimization

In goal programming model of Lee , S. , Chesser(1980), R_jand B_j have uncertainty. Thus, Ghahtarani, A., Najafi (2013) developed the above model and turned it into a multi-objective robust model:

$$\min W_1 d_1^+ + W_2 (d_2^+ + d_3^+) + W_3 \sum_{i=4}^{n+3} d_i^+ + W_4 \sum_{i=n+4}^{2n+3} d_i + W_5 d_{2n+4}^+ \tag{15}$$

$$\sum_{j=1}^n x_j + d_1^- - d_1^+ = BC \tag{16}$$

$$- \sum_{j=1}^n R_j x_j + d_2^- - d_2^+ + \{s_1 \cup \{t_1\} | s_1 \subseteq J_1, |s_1| = \Gamma_1, t_1 \in J_1, s_1\} \times \{ \sum_{j \in s_1} \hat{R}_j y_j + (\Gamma_1 - |\Gamma_1|) \hat{R}_{t_1} y_{t_1} \} = -DR \tag{17}$$

$$- \sum_{j=1}^n B_j x_j + d_3^- - d_3^+ + \{s_2 \cup \{t_2\} | s_2 \subseteq J_2, |s_2| = \Gamma_2, t_2 \in J_2, s_2\} \times \{ \sum_{j \in s_2} \hat{R}_j y_j + (\Gamma_2 - |\Gamma_2|) \hat{B}_{t_2} y_{t_2} \} = -B(BC) \tag{18}$$

$$x_j + d_{j+3}^- - d_{j+3}^+ = V_j \tag{19}$$

$$x_j + d_{2n+2+j}^- - d_{2n+2+j}^+ = D_j \tag{13}$$

$$-BC - \sum_{j=1}^n R_j x_j + d_6^- - d_6^+ + \{s_1 \cup \{t_1\} | s_1 \subseteq J_1, |s_1| = \Gamma_1, t_1 \in J_1, s_1\} \times \{ \sum_{j \in s_1} \hat{R}_j y_j + (\Gamma_1 - |\Gamma_1|) \hat{R}_{t_1} y_{t_1} \} = -M \tag{20}$$

$$-y_j \leq x_j \leq y_j \tag{21}$$

$$y_j \geq 0 \tag{22}$$

5-Fuzzy robust multi-objective programming model

Ghahtarani, A., Najafi (2013) were not informed of the form of distribution of uncertain parameters and considered these parameters as stochastic value fluctuating in a symmetric interval. In their model, the middle value of interval is called as nominal value. In real problems for decision maker, exact determination of interval in which nominal value is fluctuating is not easy and the determination of interval length is not clear. If the decision maker considers the interval length high, conservatism level is increased and high cost is imposed. If the interval length is low, decision making risk taking is increased. In addition to balance between risk taking and cost, in some cases, the decision maker states the interval length not clearly. To eliminate this problem, an approach is presented in which the decision maker can state the interval length as fuzzy numerical and have balanced risk taking.

In linear programming, if the right side coefficients are fuzzy, the model is as follows (Lai , K. K. & Wang ,2006):

$$\max \sum_{j=1}^n C_j x_j \tag{23}$$

s.t.

$$\sum_{j=1}^n a_{ij} x_j \leq \tilde{b}_i \quad i = 1, \dots, m \tag{24}$$

$$x_j \geq 0 \tag{25}$$

Generally, fuzzy linear programming problem should be turned into certain equivalent problems and be solved by common methods and the results of these equivalent certain problems are achieved by considering fuzzy conditions in turning fuzzy problems to crisp in crisp model. Let the right side fuzzy values are as follows:

$$M_{\tilde{b}_i} = \begin{cases} 1 & 1 \leq b_i \\ \frac{b_i + p_i + y}{p_i} & b_i \leq y \leq b_i + p_i \\ 0 & y \geq b_i + p_i \end{cases} \tag{26}$$

For each solution as a vector $X = (x_1, x_2, \dots, x_n)$, at first membership degree $D_i(x)$ denoting the membership degree of constraint i^{th} by X vector is defined as follows:

$$D_i(x) = \mu_{\tilde{b}_i} \left(\sum_{j=1}^n a_{ij} x_j \right) \tag{27}$$

Each $D_i(x)$ of a set makes a fuzzy set and their commonality ($\bigcap_{i=1}^m D_i$) makes the justified region. As the solution space is fuzzy, the objective function is also fuzzy. Thus, fuzzy objective function should be computed. The upper and lower limit of objective function, Z_L, Z_U are computed as follows:

$$\max Z_L = CX \tag{28}$$

s.t.

$$\sum_{j=1}^n a_{ij} x_j \leq b_i \quad i = 1, \dots, m \tag{29}$$

$$x_j \geq 0 \tag{30}$$

$$\max Z_u = CX \tag{31}$$

s.t.

$$\sum_{j=1}^n a_{ij} x_j \leq b_i + P_i \quad i = 1, \dots, m \tag{32}$$

$$x_j \geq 0 \tag{33}$$

Membership function of objective function is defined as follows:

$$G(x) = \begin{cases} 0 & Cx \leq Z_L \\ \frac{Cx - Z_L}{Z_U - Z_L} & Z_L \leq Cx \leq Z_U \\ 1 & Cx \geq Z_U \end{cases} \tag{34}$$

The solution of maximum commonality of objective function and region is justified as achieved:

$$\max \min \left[\bigcap_{i=1}^m D_i(x), G(x) \right] \tag{35}$$

The variable is changed as:

$$\max \min \left[\bigcap_{i=1}^m D_i(x), G(x) \right] \tag{36}$$

Thus:

$$\max \lambda \tag{37}$$

s. t.

$$\lambda \leq G(x) \tag{39}$$

$$\lambda \leq D_i(x) \quad \forall i \tag{40}$$

$$\lambda, x \geq 0 \tag{41}$$

Instead of $G(x)$, we can use $\frac{Cx - Z_L}{Z_U - Z_L}$ and instead of $D_i(x)$, we use $\frac{b_i + p_i - \sum a_{ij} x_j}{p_i}$. Thus, we have:

$$\max \lambda \tag{42}$$

s. t.

$$\lambda \leq \frac{Cx - Z_L}{Z_U - Z_L} \tag{44}$$

$$\lambda \leq \frac{b_i + p_i - \sum a_{ij} x_j}{p_i} \quad \forall i \tag{45}$$

$$\lambda, x_j \geq 0 \quad \forall j \tag{46}$$

In the above model, rewriting is as follows (Lai, K. K. & Wang, 2006).

$$\max \lambda \tag{47}$$

s. t.

$$\lambda(Z_U - Z_L) - Cx \leq -Z_L \tag{48}$$

$$\lambda p_i + \sum a_{ij} x_j \leq b_i + p_i \quad \forall i \tag{49}$$

$$\lambda, x_j \geq 0 \quad \forall j \tag{50}$$

5-1 Fuzzy-robust model of portfolio by goal programming

In the problem space of this model, risk parameters and return are not reliable from the view of decision maker. As the exact distribution of these data is not defined, the data fluctuation is considered in the form of a symmetrical interval. The important point regarding intervals is determining the length of interval as the decision maker is unsure of their exact value. In this thesis, this issue is occurred for the length of risk parameters and return on asset. If we denote the interval length of these parameters with \tilde{R}_j, \tilde{B}_j and based on the previous explanations, this term is consider as triangular fuzzy value and is denoted by $\tilde{\tilde{R}}_j, \tilde{\tilde{B}}_j$. Thus, fuzzy-robust counterpart is written as follows:

$$\begin{aligned} \min W_1 d_1^+ + W_2(d_2^+ + d_3^+) + W_3 \sum_{i=4}^{n+3} d_i^+ + W_4 \sum_{i=n+4}^{2n+3} d_i^+ + W_5 d_{2n+4}^+ & \quad 51 \\ \text{s. t} & \\ \sum_{j=1}^n x_j + d_1^- - d_1^+ = BC & \quad 52 \\ -\sum_{j=1}^n R_j x_j + d_2^- - d_2^+ + Z_1 \Gamma_1 + \sum_{j=1}^n P_{1j} = -DR & \quad 53 \\ -\sum_{j=1}^n B_j x_j + d_3^- - d_3^+ + Z_2 \Gamma_2 + \sum_{j=1}^n P_{2j} = -B(BC) & \quad 54 \\ x_j + d_4^- - d_4^+ = V_j & \quad 55 \\ x_j + d_5^- - d_5^+ = D_j & \quad 56 \\ -BC - \sum_{j=1}^n R_j x_j + d_6^- - d_6^+ + Z_1 \Gamma_1 + \sum_{j=1}^n P_{1j} = -M & \quad 57 \\ Z_1 + P_{1j} \geq \tilde{\tilde{R}}_j y_j & \quad 58 \\ Z_2 + P_{2j} \geq \tilde{\tilde{B}}_j y_j & \quad 59 \\ -y_j \leq x_j \leq y_j & \quad 60 \\ 0 \leq P_j, \quad 0 \leq y_i, \quad 0 \leq Z_1, \quad 0 \leq Z_2 & \quad 61 \end{aligned}$$

The mentioned model is a linear programming model with fuzzy sources (asymmetrical model) and can be turned into symmetrical model. Thus, deterministic fuzzy-robust counterpart model is as follows:

$$\begin{aligned} \text{Max } Z = \lambda & \quad 62 \\ \text{s. t} & \end{aligned}$$

$$\begin{aligned} W_1 d_1^+ + W_2(d_2^+ + d_3^+) + W_3 \sum_{i=4}^{N+4} d_i^+ + W_4 \sum_{i=n+5}^{2n+5} d_i^+ + W_5 d_{46}^+ + \lambda Z_L \leq Z_U & \quad 63 \\ \sum_{j=1}^n x_j + d_1^- - d_1^+ = BC & \quad 64 \\ -\sum_{j=1}^n R_j x_j + d_2^- - d_2^+ + Z_1 \Gamma_1 + \sum_{j=1}^n P_{1j} = -DR & \quad 65 \\ -\sum_{j=1}^n B_j x_j + d_3^- - d_3^+ + Z_2 \Gamma_2 + \sum_{j=1}^n P_{2j} = -B(BC) & \quad 66 \\ x_j + d_4^- - d_4^+ = V_j & \quad 67 \\ x_j + d_5^- - d_5^+ = D_j & \quad 68 \\ -BC - \sum_{j=1}^n R_j x_j + d_6^- - d_6^+ + Z_1 \Gamma_1 + \sum_{j=1}^n P_{1j} = -M & \quad 69 \\ Z_1 + P_{1j} + \lambda(\bar{R}_{(\max i)} - \bar{R}_{(\min i)})y_j \geq \bar{R}_{(\min i)}y_j & \quad 70 \\ Z_2 + P_{2j} + \lambda(\bar{B}_{(\max i)} - \bar{B}_{(\min i)})y_j \geq \bar{B}_{(\min i)}y_j & \quad 71 \\ -y_j \leq x_j \leq y_j & \quad 72 \\ 0 \leq P_j, \quad 0 \leq y_i, \quad 0 \leq Z_1, \quad 0 \leq Z_2, \quad 0 \leq \lambda \leq 1 & \quad 73 \end{aligned}$$

In this model, λ is the satisfaction degree of constraints.

The results of solution of goal programming robust model

In this section the results of robust multi-objective model (Ghahtarani, A., Najafi) and proposed model. These models are investigated based on data of 20 stocks of TSE.

In this model, based on the opinion of investor, the weights of goals and other variables are determined as follows:

Budget value (BC) in the problem is equal to 1 currency, expected income of investment (DR) as 0.25 currency and Beta risk (B) is 0.9 and high limit of investment in each share is 0.2 currency and lower limit in each share based on its systematic risk is zero.

Table 1-The outputs of multi-objective robust model of portfolio selection and portfolio return against robustness cost

| $\Gamma(\Gamma_1, \Gamma_2)$ | (0,0) | (1,1) | (2,2) | (3,3) | (4,4) | (5,5) | (6,6) | (7,7) | (8,8) | (9,9) | (10,10) | (15,15) | (20,20) |
|---|---------------|---------------|---------------|---------------|---------------|---------------|---------------|---------------|---------------|---------------|---------------|----------------|----------------|
| x_1 | 0.091037 | 0 | 0.065924 | 0.065924 | 0 | 0 | 0 | 0 | 0 | 0 | 0 | 0 | 0 |
| x_2 | 0 | 0 | 0 | 0 | 0.111791 | 0.111791 1 | 0 | 0 | 0 | 0.089704 3 | 0.089704 3 | 0 | 0 |
| x_3 | 0 | 0 | 0 | 0 | 0.079830 0 | 0.079830 0 | 0 | 0 | 0 | 0.064057 9 | 0.064057 9 | 0 | 0.0697956 7 |
| x_4 | 0 | 0 | 0 | 0 | 0.127912 2 | 0.127912 2 | 0 | 0 | 0 | 0.102640 3 | 0.102640 3 | 0 | 0.0482959 9 |
| x_5 | 0.161068 | 0.193886 8 | 0.116636 | 0.116636 | 0 | 0 | 0 | 0 | 0 | 0 | 0 | 0 | 0 |
| x_6 | 0 | 0 | 0 | 0 | 0 | 0 | 0 | 0 | 0 | 0 | 0 | 0 | 0 |
| x_7 | 0 | 0 | 0 | 0 | 0.143015 4 | 0.143015 4 | 0 | 0 | 0 | 0.114759 5 | 0 | 0.0606974 7 | 0 |
| x_8 | 0 | 0 | 0 | 0 | 0 | 0 | 0.151056 9 | 0 | 0 | 0.092518 5 | 0.092518 5 | 0 | 0 |
| x_9 | 0 | 0 | 0 | 0 | 0.049365 6 | 0.049365 6 | 0.049365 6 | 0.049365 6 | 0.049365 6 | 0.039612 3 | 0.039612 3 | 0.0493656 | 0 |
| x_{10} | 0.2 | 0.2 | 0.2 | 0.2 | 0.2 | 0.2 | 0.2 | 0.2 | 0.2 | 0.160485 6 | 0.160485 6 | 0.2 | 0.2 |
| x_{11} | 0 | 0 | 0 | 0 | 0 | 0 | 0.093288 5 | 0.2 | 0.2 | 0 | 0 | 0.0932885 | 0.2 |
| x_{12} | 0 | 0 | 0 | 0 | 0 | 0 | 0 | 0 | 0 | 0 | 0 | 0 | 0 |
| x_{13} | 0 | 0 | 0 | 0 | 0 | 0 | 0 | 0.143829 4 | 0.143829 4 | 0 | 0 | 0.2 | 0.100082 |
| x_{14} | 0 | 0 | 0 | 0 | 0.062843 9 | 0.062843 9 | 0.096215 1 | 0.096215 1 | 0.096215 1 | 0.077205 7 | 0.077205 7 | 0.0962151 | 0.0841211 8 |
| x_{15} | 0 | 0 | 0.104341 | 0.104341 | 0 | 0 | 0.103275 4 | 0.103275 4 | 0.103257 4 | 0 | 0 | 0 | 0.0902941 |
| x_{16} | 0 | 0 | 0 | 0 | 0.091684 3 | 0 | 0.091684 3 | 0.091684 3 | 0.009168 3 | 0.07357 | 0.07357 | 0.0916842 | 0.0801599 |
| x_{17} | 0 | 0 | 0 | 0 | 0.081946 4 | 0.081946 4 | 0.081946 4 | 0.081946 4 | 0.081946 4 | 0.065756 | 0.065756 | 0.0819464 | 0.0716460 |
| x_{18} | 0.2 | 0.2 | 0.2 | 0.2 | 0 | 0 | 0 | 0 | 0 | 0 | 0 | 0 | 0.00901 |
| x_{19} | 0.129711 3 | 0.137882 2 | 0.150698 8 | 0.150698 8 | 0.051611 3 | 0.051612 | 0.079874 | 0.033684 | 0.033684 | 0.119690 | 0.119690 | 0.0735086 | 0 |
| x_{20} | 0 | 0.049265 | 0 | 0 | 0 | 0 | 0.053294 2 | 0 | 0 | 0 | 0 | 0.0532942 | 0.0465953 |
| Budget (Million Rial) | 0.781816 3 | 0.781034 | 0.8376 | 0.8376 | 1.000000 1 | 0.908316 6 | 1.000000 4 | 1.000000 2 | 0.917466 2 | 1.000000 1 | 0.885240 6 | 1.0000001 | 1.0000001 |
| Absolute value of budget deviation | 0.218183 7 | 0.218966 | 0.1624 | 0.1624 | 0.000000 1 | 0.091683 4 | 0.000000 4 | 0.000000 2 | 0.025338 | .0000000 1 | 0.114759 4 | .00000001 | 0.0000001 |
| Real return | - 0.028526 | - 0.033615 | - 0.018355 | - 0.018355 | 1.175534 5 | 1.177369 9 | - 0.032233 | - 0.041444 | - 0.039793 | 0.943388 8 | - 0.035038 | 0.4580237 1 | - 0.0522391 |

Table 2- The output of multi-objective fuzzy-robust optimization model of portfolio and portfolio return against robustness costs

| $\Gamma_1(\Gamma_1, \Gamma_2)$ | (0,0) | (1,1) | (2,2) | (3,3) | (4,4) | (5,5) | (6,6) | (7,7) | (8,8) | (9,9) | (10,10) | (15,15) | (20,20) |
|--------------------------------|-----------|-----------|-----------|------------|------------|-----------|-----------|-----------|-----------|-----------|-----------|-----------|-------------|
| X1 | 0.0402248 | 0 | 0 | 0 | 0 | 0.0012016 | .000995 | .00084859 | 0.000731 | 0.000656 | 0.0005892 | 0 | 0.0040633 |
| X2 | 0 | 0 | 0 | 0 | 0 | 0 | 0 | 0 | 0 | 0 | 0 | 0 | 0.064296 |
| X3 | 0.0492123 | 0.0522102 | 0.0522102 | 0.0522102 | 0.0462087 | 0.0463670 | 0.046379 | 0.0463875 | 0.0463938 | 0.0463987 | 0.0464026 | 0.052007 | 0.0459141 |
| X4 | 0.0788524 | 0.0836559 | 0.0836559 | 0.0836559 | 0.0740397 | 0.0742934 | 0.0743126 | 0.0743262 | 0.0743363 | 0.0743441 | 0.0743503 | 0.0833304 | 0.0735677 |
| X5 | 0.1292982 | 0.1371748 | 0.1371748 | 0.1371748 | 0.06682351 | 0.0670525 | 0.0670698 | 0.0670821 | 0.0670912 | 0.0670983 | 0.0671039 | 0.0752088 | 0.1206325 |
| X6 | 0.0438787 | 0.0465517 | 0.0465517 | 0.0465517 | 0.0412006 | 0.0413418 | 0.0413525 | 0.041361 | 0.0413657 | 0.0413701 | 0.0413735 | 0.0463705 | 0.040938 |
| X7 | 0 | 0 | 0 | 0 | 0.0827817 | 0.0830654 | 0.083087 | 0.0831021 | 0.0831134 | 0.0831221 | 0.0831291 | 0.09317 | 0 |
| X8 | 0 | 0 | 0 | 0 | 0 | 0 | 0 | 0 | 0 | 0 | 0 | 0 | 0 |
| X9 | 0 | 0 | 0 | 0 | 0.0285752 | 0.0286731 | 0.0286805 | 0.0286858 | 0.0286897 | 0.0286927 | 0.0286951 | 0 | 0 |
| X10 | 0.1232908 | 0.1308013 | 0.1308013 | 0.1308013 | 0.1157656 | 0.1161624 | 0.1161925 | 0.1162137 | 0.11623 | 0.1162417 | 0.1162514 | 0.1302924 | 0.115028 |
| X11 | 0.0575088 | 0.061012 | 0.061012 | 0.061012 | 0.0539988 | 0.0541838 | 0.0541978 | 0.0542077 | 0.0542151 | 0.0542208 | 0.0542253 | 0.6077465 | 0.0536545 |
| X12 | 0 | 0 | 0 | 0 | 0 | 0 | 0 | 0 | 0 | 0 | 0 | 0 | 0.0061008 |
| X13 | 0 | 0 | 0 | 0 | 0.0662594 | 0.0664864 | 0.0665036 | 0.0665158 | 0.0665249 | 0.0665318 | 0.0665374 | 0.0745738 | 0 |
| X14 | 0 | 0 | 0 | 0 | 0.0556927 | 0.0558835 | 0.0558980 | 0.0559082 | 0.0559159 | 0.0559217 | 0.0559264 | 0 | 0 |
| X15 | 0 | 0 | 0 | 0 | 0 | 0 | 0 | 0 | 0 | 0 | 0 | 0 | 0.0593983 |
| X16 | 0 | 0 | 0 | 0 | 0 | 0 | 0 | 0 | 0 | 0 | 0 | 0 | 0.0527319 |
| X17 | 0 | 0 | 0 | 0 | 0.0474337 | 0.0475962 | 0.0476085 | 0.0476172 | 0.0476237 | 0.0476287 | 0.0476327 | 0 | 0.0471313 |
| X18 | 0.2001039 | 0.2001039 | 0.2001039 | 0.2001039 | 0.2001039 | 0.2001039 | 0.2001039 | 0.2001039 | 0.2001039 | 0.2001039 | 0.2001039 | 0.2001039 | 0.2001039 |
| X19 | 0.0919505 | 0.0975519 | 0.0975519 | 0.0975519 | 0.0863383 | 0.0866342 | 0.0866566 | 0.0866724 | 0.0866842 | 0.080067 | 0.0867006 | 0.0971724 | 0.0857879 |
| X20 | 0.0328544 | 0.0348557 | 0.0348557 | 0.0348558 | 0.0308492 | 0.0309549 | 0.0309629 | 0.0309686 | 0.0309728 | 0.030976 | 0.0309786 | 0.0347201 | 0.0306525 |
| Budget | 0.8471748 | 0.8439174 | 0.8439174 | 0.8439176 | 0.996071 | 1.0000001 | 1.0000002 | 1.0000008 | 0.9999916 | 0.9933736 | 1 | 1.4946958 | 1.0000007 |
| Budget deviation | 0.1528252 | 0.1560826 | 0.1560826 | 0.1560824 | 0.003929 | 0.0000001 | 0.0000002 | 0.0000008 | 0.0000084 | 0.0066264 | 0 | 0.4946958 | 0.0000007 |
| Return | -0.033806 | -0.032633 | -0.032633 | -0.0326325 | 0.6735647 | 0.6757137 | 0.6759057 | 0.6760399 | 0.6761412 | 0.6760547 | 0.6762799 | 0.7547609 | -0.03364277 |

As shown in Figures 1 2, by increasing conservatism, portfolio return is reduced. As some different objectives are satisfied simultaneously, in some levels of conservatism, there are some distributions. Fuzzy-robust multi-objective programming model compared to multi-objective robust model has stable condition in terms of deviation from objective and disturbance in reduction of return and this is one of the advantages of the mentioned model.

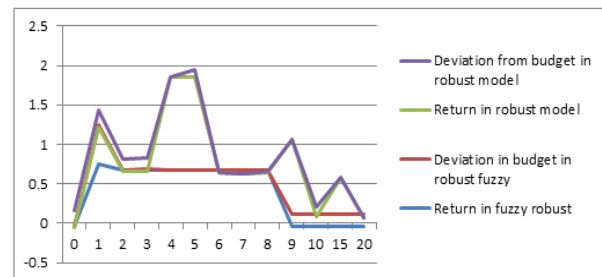


Figure 1- The relationship between deviation from budget in robust multi-objective models and robust-fuzzy against return to robustness value

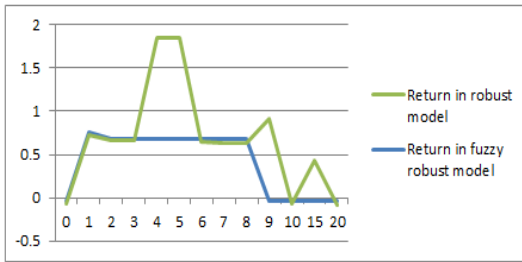


Figure 2- The relationship between return in robust multi-objective models and fuzzy-robust compared to robust value

CONCLUSION

This paper is used to optimize portfolio and explains Lee, S., Chesser model and then to consider uncertainty of data of return and risk, multi-objective robust model of Ghahtarani, A., Najafi is defined. Then, to remove the problems in Ghahtarani, A., Najafi model, their model is developed as fuzzy robust and the results are compared after implementation in TSE. The results showed high stability of fuzzy robust model in various levels of conservatism compared to robust model.

Acknowledgements

The first author was supported by Islamic Azad University, Khorramabad Branch. Also we would like

to thank for valuable references and useful discussions.

REFERENCES

1. Sajadi, J., Gharekhani, M., Safari, A. 2010. Robust optimization of portfolio with CAPM approach. The seventh conference of industry engineering. The science and industry University, Industry engineering school.
2. Soyster, A. L., 1973 "Convex programming with set-inclusive constraints and applications of risk", *The Journal of finance*, 19:3, 425-42
3. Ben-Tal, A. & Nemirovski, A., 1999, "Robust solutions to uncertain programs", *Operations Research Letters*, 25, 1-13.
4. Ben-Tal, A. & Nemirovski, A., 2000, "Robust solutions of linear programming problems contaminated with uncertain data", *Mathematical Programming*, 88, 411-424.
5. Ben-Tal, A. & Nemirovski, A., 1998 "Robust convex optimization", *Mathematical Operations Research*, 23, 769-805.
6. Ben-Tal, A., Boyd, S., Nemirovski, A., 2006 "Extending Scope of Robust Optimization: Comprehensive Robust Counterparts of Uncertain Problems", *Mathematical Programming Ser. B* 107, 63-89.
7. Ben-Tal, A., Margalit, T., & Nemirovski, A., 2000, "Robust modeling of multistage portfolio problems", Kluwer academic publishers.

8. Bertsimas, D. & Pachamanova, D., 2008 "Robust multi-period portfolio management in the presence of transaction costs", *Computers & operations Research*, 35: 1, 3-17
9. Bertsimas, D., M. Sim, 2004, "The Price of robustness", *Operation Research*, 52(1), 35-5.
10. El-Ghaoui, L. & Lebret, H., 1997, "Robust Solutions to Least-Squares Problems With Uncertain Data", *SIAM Journal on Matrix, Analysis and Applications*, 18, 1035-64
11. El-Ghaoui, L., Oustry, F., & Lebret, H., 1998 "Robust solutions to uncertain semi-definite programs", *SIAM Journal Optimization* 9, 33-52.
12. El-Ghaoui, L., Lebret, H., 1997 "Robust solutions to least-square problems to uncertain data matrices", *SIAM J. Matrix Anal. Appl.* 18, 1035-1064
13. Fang, Y., Lai, K. K. & Wang, S. Y., 2006, "Portfolio rebalancing model with transaction costs based on fuzzy decision theory", *European Journal of Operation Research*, 175, 879-893.
14. Ghahtarani, A., Najafi, A.A., 2013, Robust goal programming for multi-objective portfolio selection problem, *Economic Modelling*, 33, pp. 588-592.
15. Lee, S., Chesser, D., 1980, "Goal programming for portfolio selection", *Journal of Portfolio Management*, 6, 22-26
16. Markowitz, H. M., 1991, "Foundations of portfolio theory", *The journal of finance*, 46, 469-477.
17. Markowitz H. M. 1952, "portfolio selection", *Journal of Finance*, 51, 77-91
18. Mulvey, J. M., Vanderbei, R.J., Zenios, S.A., 1995 "Robust optimization of large-scale systems", *Operations Research*, 43, 264-281