



Biodiversity of Avifauna in Chilkigarh, Jhargram, West Bengal (India)

Sanjib Kumar Das^{1*}, Sourav Karan¹, Koushik Sen¹

¹Department of Zoology, Jhargram Raj College, Jhargram, West Bengal, India.

ABSTRACT

Chilkigarh is a rural and tribal area in the jangal-mahal belt of West Bengal situated at the bank of Dulung river in Jamboni block, district Jhargram, 14 km away from the main town of Jhargram. The present study deals with the documentation of avifaunal diversity in this region. The study was carried out from December 2021 to July 2022. The study area includes Chilkigarh Raj Palace, Dulung river bank, Chilkigarh Kanak Durga Sacred Grove, Chilkigarh hospital area, Sonajhuri garden, Sal Forest, Open grasslands, Agricultural lands, etc. A total of 37 birds belonging to 24 families under 10 orders were photographed and identified at the species level. 19 out of these 37 species are legally protected under Wildlife (Protection) Act, 1972. The most dominant species-rich order was Passeriformes (54%). Based on feeding habits they have been grouped and Omnivore becomes the dominant (37.8%) one. This study provides important data-based documentation for future investigation and conservation strategy planning in this particular area.

Keywords: Avifaunal diversity, Feeding habits, GPT, Chilkigarh birds, Jhargram, West Bengal

Corresponding author: Sanjib Kumar Das

e-mail ✉ sanjib.biology2012@gmail.com

Received: 17 June 2022

Accepted: 04 October 2022

feeding habits, enumeration of their local status, and its comparison with global population trend (GPT) which will provide a guideline for future large-scale study and planning of conservation strategies.

INTRODUCTION

An ecosystem is a structural and functional unit of ecology, consisting of both organisms and the physical environment with which they interact (Chapin *et al.*, 2011). Faunal components of the ecosystem play a crucial role in the maintenance and sustainability of the ecosystem; Feathered bipeds are paying to the ecosystem through various services like pest control, scavenging, pollination, seed dispersal, etc. (Priya *et al.*, 2022). Chilkigarh is a rural and tribal area on the bank of the Dulung river. Chilkigarh Kanak Durga Sacred Grove is one of the famous tourist destinations for its distinct habitat patches and floral and faunal components. 388 species of higher plants and 26 species of megafauna including 13 species of birds have been previously reported (Bhakat, 2015). In 2018 the site has been declared as Chilkigarh Kanak Durga Biodiversity Heritage Site by Environment Department, Govt. of West Bengal, India. Chilkigrah Raj Palace, Sonajhuri garden, and Sal Forest areas are other important places to visit. As the avifaunal diversity of the entire chilkigarh area has not been worked out previously, this study is an effort to document avian diversity along with their

MATERIALS AND METHODS

Study area

Chilkigarh (**Figure 1**) is located between latitudes 22° 27' 20" N to 22° 56' 50" N and longitude 86° 52' 20" E to 86° 53' 10" E; the average elevation is 60–85 m of the mean sea level (Saadi *et al.*, 2020). It is situated around 14 km away from Jhargram town, West Bengal. This area is located at the bank of the Dulung river and consists of mixed vegetation of deciduous, semi-deciduous, and evergreen trees (Bhakat, 2015). Due to various kinds of habitats, this area contains huge vegetation of Sal Forest which is commonly under the 'Tropical Moist Deciduous Forest' type, and various kinds of shrubs, herbs, climbers, and grasses which provides a good source of food and habitat for several animals. Several different areas like Dulung river bank, Chilkigarh Kanak Durga Sacred Grove, Open grassland, Chilkigarh hospital area, Chilkigarh Raj Palace, Sonajhuri garden, Sal forests, and Agricultural lands were the primary sites of this study.

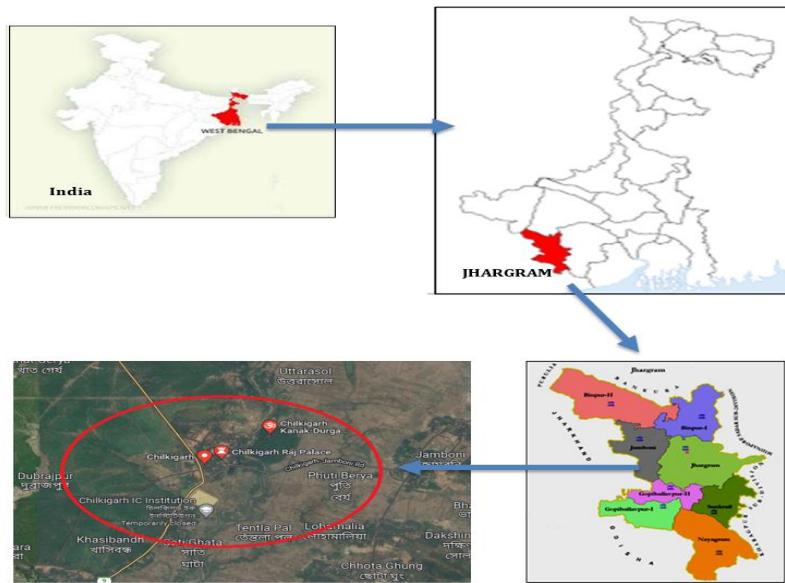


Figure 1. Location map of Chilkigarh in West Bengal, India.

(Source: <https://www.freeworldmaps.net/>, https://en.m.wikipedia.org/wiki/File:Jhargram_district.svg, <https://www.google.com/maps/place/Chilkigarh>)

Data collection & identification

During the study, photographic documentation was done by visiting different study sites from 7:00 am to 10:00 am and 3:00 pm to 6:00 pm adopting the line transect method (Bibby *et al.*, 1992; Buckland *et al.*, 1993). No study was done after sunset. The survey was conducted once or twice a week during the winter, summer, and monsoon seasons by taking photographs of birds from all possible angles using a Canon IXUS 190 Digital Camera. Identification of birds was done following Grimmett *et al.* (2011) and Ali (1990). Taxonomic information of each bird species (scientific name, order, and family names) has been compiled by accessing Clements Checklists of Birds of the World v2021 (Clements *et al.*, 2021). Observed birds were classified into different foraging groups as carnivorous (CV), frugivorous (F), granivorous (G), insectivorous (I), nectarivorous (N), omnivorous (O) types based on their feeding and foraging habits as described by Ali *et al.*, (1987); Mukhopadhyay and Mazumdar (2017a); Kumbar and Ghadage (2014); Das and Bandyopadhyay (2016).

The status of the observed birds was determined using standard methods outlined by Khan (1980); Khan and Naher (2009). During field visits, 80-100% of occurrence was categorized as very common (VC), 50-79% common (C), 20-49% fairly common (FC), and below 19% rare (R).

IUCN conservation status and Global Population Trend (GPT - I-increasing, D-decreasing, S-stable, U-unknown) of the documented birds were collected from the Red list of IUCN (2021 www.iucnredlist.org).

The Relative Diversity (RDi) of listed bird families was calculated using the following formula (Torre-Cuadros *et al.*, 2007).

$$RDi = \frac{\text{Number of bird species in family 'I'}}{\text{Total number of bird species}} \times 100 \quad (1)$$

RESULTS AND DISCUSSION

A total of 37 bird species belonging to 24 families under 10 orders have been recorded from Chilkigarh (**Table 1 and Figure 4**). The highest number of species encountered during the study period belongs to the order Passeriformes (54%) followed by Coraciiformes (11%) and Columbiformes (8%). Three orders Piciformes, Accipitriformes, and Cuculiformes each contribute 5% of the total listed species. The remaining 4 orders -Bucerotiformes, Pelecaniformes, Psittaciformes, and Suliformes, were each contributed 3% of the total count (**Figure 2**).

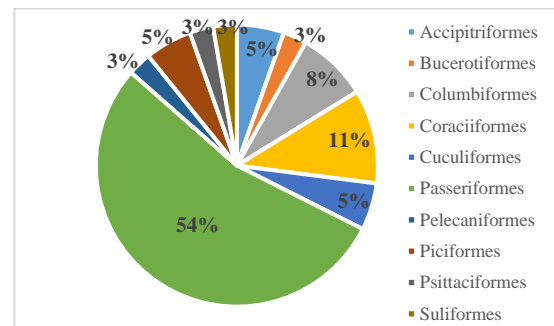


Figure 2. Percentage composition of Bird species under different orders

According to IUCN (Ver 3.1), all 37 bird species recorded from Chilkigarh were found to be Least Concern (LC) in conservation status (**Table 1**). Order Passeriformes is represented by 20 species belonging to 17 genera under 12 families viz Alaudidae, Artamidae, Dicruridae, Laniidae, Leitrichidae, Passeridae, Oriolidae, Pycnonotidae, Corvidae, Muscicapidae, Nectariniidae, Sturnidae respectively. Order Coraciiformes is represented by 4

species belonging to 4 different genera under 3 families viz, Alcedinidae, Coraciidae, and Meropidae. Order Columbiformes is represented by 3 species belonging to 2 genera under the single-family Columbidae. Order Piciformes is represented by 2 species belonging to 2 genera under 2 families Megalimidae and Picidae. Order Accipitriformes and Cuculiformes are each represented by 2 species belonging to 2 genera under single-family Accipitridae and Cuculidae respectively. Order Bucerotiformes, Pelecaniformes, Psittaciformes and Suliformes are each represented by single species under four families viz. Upapidae, Ardeidae, Psittacidae, and Phalacrocoracidae respectively. 19 out of 37 birds are found to be legally protected under Wildlife (Protection) Act, 1972 (Table 1). All 37 birds were grouped based on their feeding habit. 37.83% of the total count shows Omnivory. Followed by Insectivory (24.32%), Carnivory (18.91%) and Granivory (8.1%). Frugivory and Nectarivory both are represented by 5.4% (Table 1 and Figure 3). Sturnidae followed by Columbidae have shown the highest genus-to-species proportion (Table 1).

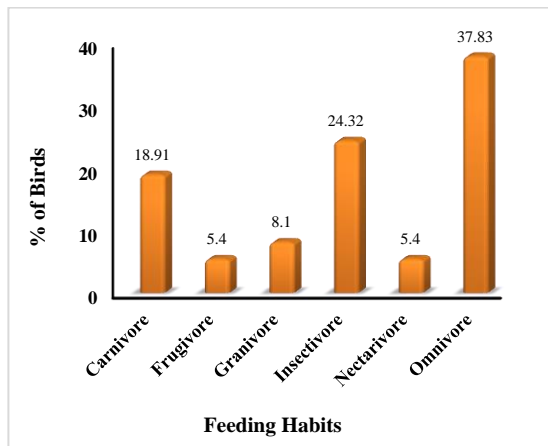


Figure 3. Percent distribution of birds in Chilkiarh based on feeding habits

Relative Diversity (RDi) (1) analysis shows the same trend i.e, Sturnidae is the most diverse family (4 species, RDi=10.81) in the study area, followed by Columbidae (3 species, RDi=8.1) and others. Only one species of bird has been recorded from each of the following 14 families - Ardeidae, Artamidae, Alaudidae, Coraciidae, Megalimidae, Meropidae, Dicruridae, Laniidae, Leiotrichidae, Passeridae, Picidae, Psittacidae, Phalacrocoracidae, Upupidae (Table 2). Unfolding the story of Local status reveals that six bird species are rare (R), eight are fairly common (FC), fourteen are very common (VC), and the rest nine are common (C). Global Population Trend (GPT) analysis uncovers that six bird species are decreasing globally, fifteen are stable, nine are increasing and seven belong to the unknown category (Table 1 and Figure 5). The most species-rich order was Passeriformes (54%), consistent with the Indian trend (Praveen et al., 2016). Sturnidae is the most diverse family with RDi=10.81. The highest genus-to-species proportion has also been shown by the same family (Table 1). Among documented species, 19 are found to be legally protected under Wildlife (Protection) Act, 1972. The Chilkiarh area is a habitat of diversified bird species. The majority of the birds in the study area have shown omnivory (37.8%) suggesting the availability of diverse categories of food resources including a variety of plantations. On comparing the Local status of birds with Global Population Trend (GPT), it has been noticed that three species are globally declining viz. Common Pigeon (*Columba livia*), Rufous Treepie (*Dendrocitta vagabunda*), and House-Sparrow (*Passer domesticus*) are very common in this area. Also, two birds viz. Common Hoopoe (*Upupa epops*) and Brown Shrike (*Lanius cristatus*) are found to be fairly common though they are decreasing globally. This may be due to the presence of suitable habitats and plenty of foods (Mukhopadhyay & Mazumdar, 2017b). Only one bird Red-whiskered Bulbul (*Pycnonotus jocosus*), rare in the study area is also showing decreasing trend globally. Two globally stable species are rare in Chilkiarh, Laughing Dove and Plaintive Cuckoo, suggesting their conservation policy is needed.

Table 1. Order-wise checklist with scientific & common names along with WPA, IUCN status, feeding habits, GPT & Local Status of each bird species encountered at Chilkiarh.

Sl.No.	Family	Scientific Name	Common Name	WPA status	IUCN Status (ver 3.1)	Feeding habit*	GPT	Local Status
Order : Accipitriformes								
1	Accipitridae	<i>Elanus caeruleus</i>	Black-winged Kite		LC	C	stable	FC
2	Accipitridae	<i>Accipiter badius</i>	Shikra	Sch. I	LC	C	stable	FC
Order : Bucerotiformes								
3	Upupidae	<i>Upupa epops</i>	Common Hoopoe	Sch. IV	LC	O	decreasing	FC
Order : Columbiformes								
4	Columbidae	<i>Spilopelia chinensis</i>	Spotted Dove		LC	G	increasing	VC
5	Columbidae	<i>Spilopelia senegalensis</i>	Laughing Dove		LC	G	stable	R
6	Columbidae	<i>Columba livia</i>	Common Pigeon		LC	G	decreasing	VC
Order : Coraciiformes								
7	Alcedinidae	<i>Alcedo atthis</i>	Common Kingfisher	Sch. IV	LC	C	unknown	C
8	Alcedinidae	<i>Halcyon smyrnensis</i>	White-breasted Kingfisher	Sch. IV	LC	C	increasing	C
9	Coraciidae	<i>Coracias benghalensis</i>	Indian Roller	Sch. IV	LC	I	increasing	C
10	Meropidae	<i>Merops orientalis</i>	Asian Green Bee-eater	Sch. IV	LC	I	increasing	C

Order : Cuculiformes								
11	Cuculidae	<i>Cacomantis merulinus</i>	Plaintive Cuckoo		LC	I	stable	R
12	Cuculidae	<i>Centropus sinensis</i>	Greater Coucal	Sch. IV	LC	O	stable	VC
Order : Passeriformes								
13	Alaudidae	<i>Mirafrass assamica</i>	Bengal Bushlark		LC	O	stable	FC
14	Artamidae	<i>Artamus fuscus</i>	Ashy Woodswallow		LC	C	stable	FC
15	Corvidae	<i>Corvus splendens</i>	House Crow		LC	O	stable	VC
16	Corvidae	<i>Dendrocitta vagabunda</i>	Rufous Treepie	Sch. IV	LC	O	decreasing	VC
17	Dicruridae	<i>Dicrurus macrocercus</i>	Black Drongo	Sch. IV	LC	I	unknown	VC
18	Laniidae	<i>Lanius cristatus</i>	Brown Shrike	Sch. IV	LC	I	decreasing	FC
19	Leiotrichidae	<i>Argya striata</i>	Jungle Babbler		LC	O	stable	C
20	Muscicapidae	<i>Copsychus saularis</i>	Oriental Magpie-robin		LC	I	stable	C
21	Muscicapidae	<i>Phoenicurus ochruros</i>	Black Redstart		LC	I	increasing	R
22	Nectariniidae	<i>Cinnyris asiaticus</i>	Purple Sunbird		LC	N	stable	VC
23	Nectariniidae	<i>Leptocoma zeylonica</i>	Purple-rumped Sunbird		LC	N	stable	VC
24	Oriolidae	<i>Oriolus xanthornus</i>	Black-hooded Oriole		LC	O	stable	C
25	Oriolidae	<i>Oriolus kundoo</i>	Indian Golden Oriole		LC	O	unknown	R
26	Passeridae	<i>Passer domesticus</i>	House Sparrow		LC	O	decreasing	VC
27	Pycnonotidae	<i>Pycnonotus cafer</i>	Red-vented Bulbul	Sch. IV	LC	O	increasing	C
28	Pycnonotidae	<i>Pycnonotus jocosus</i>	Red-whiskered Bulbul	Sch. IV	LC	O	decreasing	R
29	Sturnidae	<i>Sturnia malabarica</i>	Chestnut-tailed Starling	Sch. IV	LC	I	unknown	C
30	Sturnidae	<i>Sturnia pagodarum</i>	Brahminy Starling		LC	O	unknown	R
31	Sturnidae	<i>Gracupica contra</i>	Asian Pied Starling	Sch. IV	LC	O	increasing	VC
32	Sturnidae	<i>Acridotheres tristis</i>	Common Myna	Sch. IV	LC	O	increasing	VC
Order : Pelecaniformes								
33	Ardeidae	<i>Ardeola grayii</i>	Indian Pond Heron	Sch. IV	LC	C	unknown	VC
Order: Piciformes								
34	Megalimidae	<i>Psilopogon asiatica</i>	Blue-throated Barbet	Sch. IV	LC	F	stable	FC
35	Picidae	<i>Dinopium benghalense</i>	Black-rumped Flameback		LC	I	stable	FC
Order : Psittaciformes								
36	Psittacidae	<i>Alexandrinus krameri</i>	Rose-ringed Parakeet	Sch. IV	LC	F	increasing	VC
Order: Suliformes								
37	Phalacrocoracidae	<i>Phalacrocorax fuscicollis</i>	Indian Cormorant	Sch. IV	LC	C	unknown	VC

Note. *Feeding Habit: CV=Carnivore, F=Frugivore, G= Granivore, I=Insectivore, N= Nectarivore, O=Omnivore.

** Local Status: VC=Very Common, C=Common, FC=Fairly Common, U=Unknown.

Table 2. Relative diversity (RDi) values of different bird families were recorded from the study area.

Avian Families	Number of Species	RDi value
Sturnidae	4	10.81
Columbidae	3	8.1
Accipitridae, Alcedinidae, Corvidae, Cuculidae, Muscicapidae, Nectariniidae, Oriolidae, Pycnonotidae	2	5.4
Ardeidae, Artamidae, Alaudidae, Coraciidae, Megalimidae, Meropidae, Dicruridae, Laniidae, Leiotrichidae, Passeridae, Picidae, Psittacidae, Phalacrocoracidae, Upupidae	1	2.7

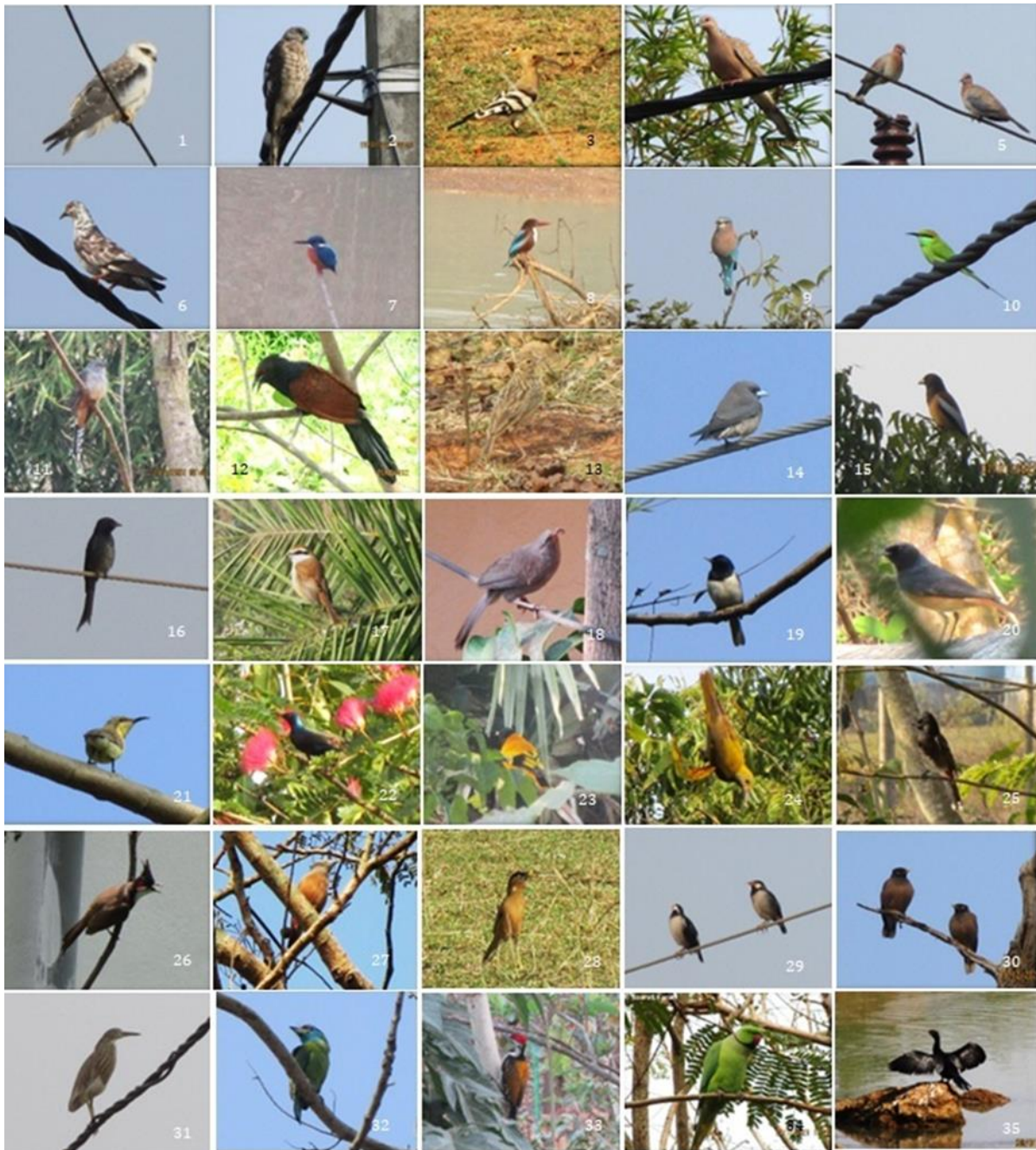


Figure 4. 1. Black Winged Kite 2. Shikra 3. Common Hoopoe 4. Spotted Dove 5. Laughing Dove 6. Common Pigeon 7. Common Kingfisher 8. White-breasted Kingfisher 9. Indian Roller 10. Asian Green Bee-eater 11. Plaintive Cuckoo 12. Greater Coucal 13. Bengal Bushlark 14. Ashy Wood swallow 15. Rufous Treepie 16. Black Drongo 17. Brown Shrike 18. Jungle Babbler 19. Oriental Magpie-robin 20. Black Redstart 21. Purple Sunbird (female) 22. Purple Sunbird (male) 23. Black-hooded Oriole 24. Indian Golden Oriole 25. Red-vented Bulbul 26. Red-whiskered Bulbul 27. Chestnut-tailed Starling 28. Brahminy Starling 29. Asian Pied Starling 30. Common Myna 31. Indian Pond Heron 32. Blue-throated Barbet 33. Black-rumped Flameback 34. Rose-ringed Parakeet 35. Indian Cormorant.

CONCLUSION

It can be concluded from the above study that the Chilkiarh area is maintaining a good composition of bird species. The study was done during day time only, so a more intensive study (documentation of nocturnal bird species and seasonal

variation) would surely result in the identification of many more birds in this region. This preliminary study will provide a baseline for future investigation of the avian composition of this particular area. The impact of tourism and anthropogenic alteration of habitats on the bird's composition in Chilkiarh is also needed to be detailed out through the intensive study.

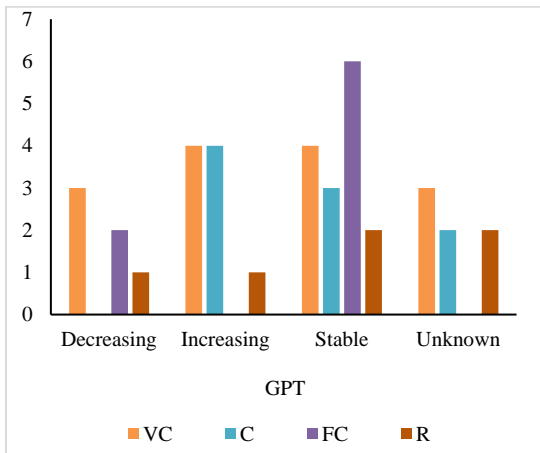


Figure 5. Comparative graphical representation between Local Status (VC, C, FC, R) and Global Population Trend (GPT) of birds documented from Chilkigarh

ACKNOWLEDGMENTS: The authors are grateful to Dr. Debnarayan Roy (Principal, Jhargram Raj College) and Dr. Rahul Kumar Datta (Associate Professor & Head, Department of Zoology, Jhargram Raj College) for their valuable suggestions during this work.

CONFLICT OF INTEREST: None

FINANCIAL SUPPORT: None

ETHICS STATEMENT: In this study none of the bird species were captured or harmed by any means. Images in the figure are the result of live photography.

REFERENCES

- Ali, S. (1990). *The book of Indian birds*. 11th ed. Oxford.
- Ali, S., Ripley, S. D., & Dick, J. H. (1987). *Compact handbook of the birds of India and Pakistan*. Delhi. Oxford University Press.
- Anonymous. (2003). The Wildlife (Protection) Act, 1972 with the Wildlife (Protection) Amendment Act, 2002. The Gazette of India, 148pp.
- Bhakat, R. K. (2015). Biodiversity Conservation Through A Sacred Grove. *Indian Journal of Biological Sciences*, 21, 59-62.
- Bibby, C. J., Burgess, N. D., & Hill, D. A. (1992). *Bird Census Techniques*. Academic Press, London.
- Buckland, S. T., Anderson, D. R., Burnham, K. P. & Laake, J. L. (1993). *Introduction to Distance Sampling: Estimating Abundance of Biological Populations*. Oxford University Press.
- Chapin, F. S., Matson, P. A., & Vitousek, P. M. (2011). The ecosystem concept. In *Principles of terrestrial ecosystem ecology* (pp. 3-22). Springer, New York, NY.
- Clements, J. F., Schulenberg, T. S., Iliff, M. J., Billerman, S. M., Fredericks, T. A., Sullivan, B. L. & Wood, C. L. (2021). The eBird/Clements Checklist of Birds of the World: v2021. <https://www.birds.cornell.edu/clementschecklist>
- Das, P., & Bandyopadhyay, S. A. (2016). A preliminary assessment of avifaunal diversity in and around Sarojini Naidu college campus, Kolkata, WestBengal, India. *International Journal of Fauna and Biological Studies*, 3(2), 56-61.
- Grimmett, R., Inskipp, C., & Inskipp, T. (2011). *Birds of the Indian Subcontinent*. 2nd edn. Oxford University Press. New Delhi, India.
- IUCN. (2022). *The IUCN Red List of Threatened Species. Version 2022-1*. Accessed on [05 August 2022]. <https://www.iucnredlist.org>
- Khan, M. A. R. (1980). A Comparative account of the avifauna of the shoals and the neighbouring plantation in the Nilgiri. *Journal of the Bombay Natural History Society*, 75(3), 1028-1035.
- Khan, S. I., & Naher, H. (2009). Birds in Kurigram district of Bangladesh. *Journal of Threatened Taxa*, 1(4), 245-250.
- Kumbar, S. M., & Ghadage, A. B. (2014). Preliminary study on avian fauna of the Krishna River basin Sangli district, Western Maharashtra, India. *Journal of Environmental Biology*, 35(6), 1005.
- Map of Jhargram in West Bengal map. Available from: Wikipedia. https://en.m.wikipedia.org/wiki/File:Jhargram_district.svg
- Map of West Bengal in India map. Available from: <https://www.freeworldmaps.net/>
- Mukhopadhyay, S., & Mazumdar, S. (2017b). Avifaunal Diversity of Bibhutibhushan Wildlife Sanctuary, West Bengal, India. *World Scientific News*, 71, 150-167.
- Mukhopadhyay, S., & Mazumdar, S. (2017a). Composition, diversity and foraging guilds of avifauna in a suburban area of southern West Bengal, India. *The Ring*, 39(1), 103-120.
- Praveen, J., Jayapal, R. & Pittie, A. (2016). A Checklist of the birds of India. *Indian Birds*, 11(5&6), 113-172.
- Priya, D. S., Delu, V., Yodha, K., Dahiya, T., Kour, A., & Punia, N. (2022). Role of birds in agroecosystem: A review on agricultural and economic ornithology. *The Pharma Innovation SP*, 11(7), 2300-2314.
- Saadi, S. M. A. I., Mondal, I., Sarkar, S., & Mondal, A. K. (2020). Medicinal plants diversity modeling using remote sensing & GIS technology of Chilkigarh, West Bengal, India. *Tropical Plant Research*, 7(2), 440-451.
- Satellite image of Chilkigarh in Jhargram map. Available from: <https://www.google.com/maps/place/Chilkigarh>
- Torre-Cuadros, L., De Los Ángeles, M., Herrando-Pérez, S., & Young, K. R. (2007). Diversity and structural patterns for tropical montane and premontane forests of central Peru, with an assessment of the use of higher-taxon surrogacy. *Biodiversity and Conservation*, 16(10), 2965-2988. doi:10.1007/s10531-007-9155-9